

SMART WATERMETER ADD-ON

Explorer Innovation Program



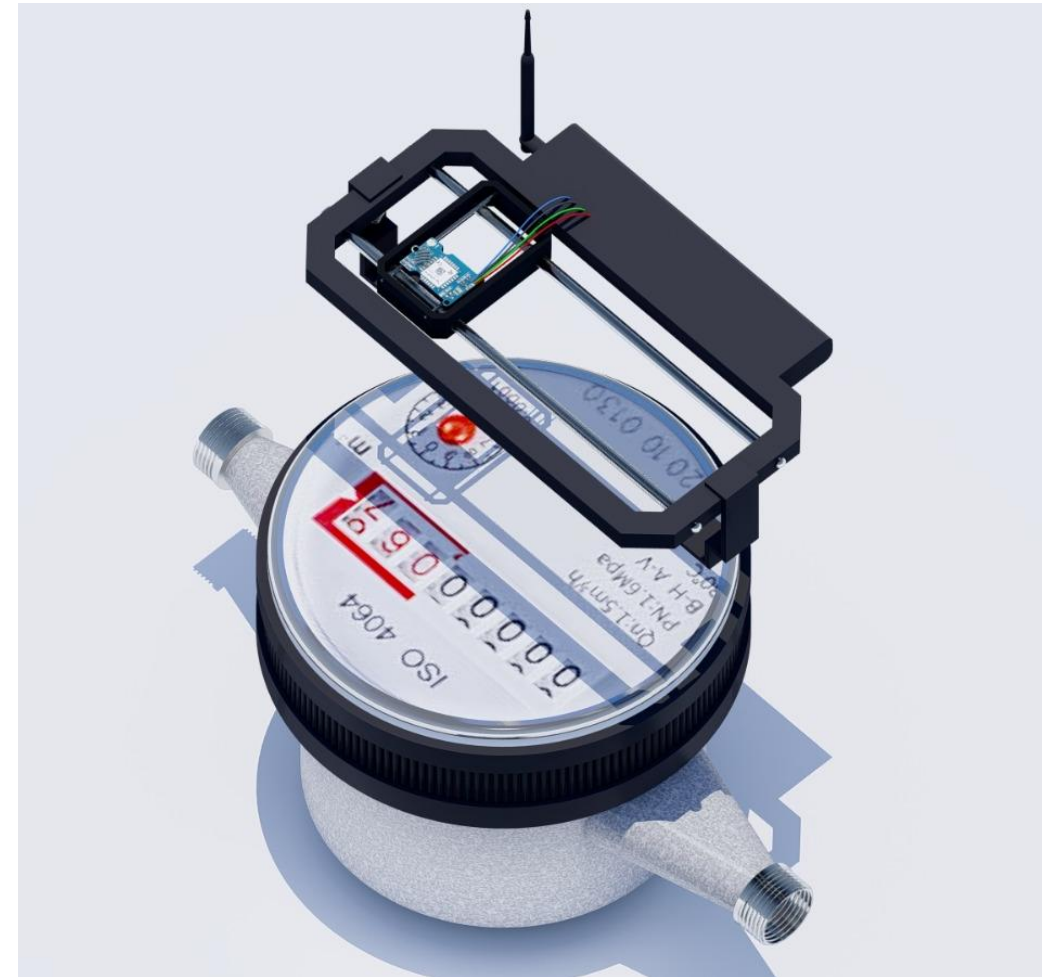
Problem

Water shortage becomes year after year a real-life threat.

- An important amount of wasted clean water is due to the leaking distribution systems
- The manual way of collecting measuring water consumption

Solution

Our solution consists in the realization of an autonomous connected device that is installed above the totalizers of the water meters. With its sensors oriented towards the totalizer, it can make the necessary measurements with precision. And with its LPWAN connectivity (Lora), it can communicate these measurements to the application server which records and analyses data to detect leaks, as well as issuing invoices and allowing customers to track their consumption.



Target market

Companies and organisations that need tracking their water consumption.

Water agencies and distributors.

THANKS